

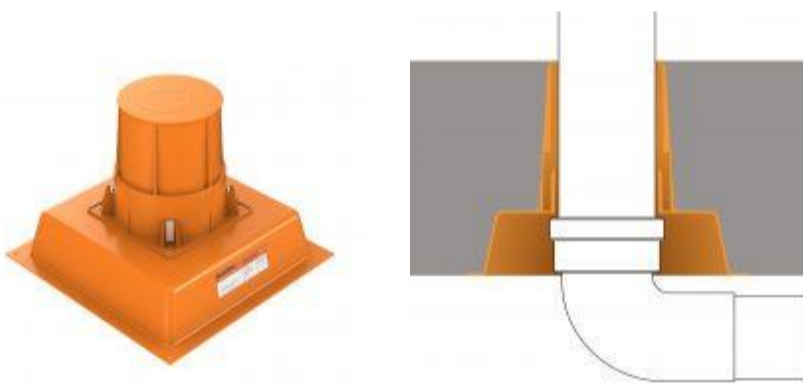
QuelCast Manifold

The QuelCast Manifold has been designed and developed to create a 75 mm recess in the floor slab either on the top or on the bottom of the floor slab to allow for applications for example:

- Shower traps for walk-in showers and wet rooms
- Soil pipe manifolds
- Pipe connections
- Limited ceiling space



Where there is limited ceiling space and so the plastic pipe can be installed closer to the ceiling with the pipe connection recessed in the slab. When installing the QuelCast Manifold on the underside of the floor slab, ensure that you cut off the spigot on the manifold and then, using self-tapping steel screws, secure the QuelCast110 Cast In Fire Collar to the manifold. When installing the Manifold on the top side of the floor slab, the Manifold spigot is simply slotted into the top of the QuelCast110 Cast In Fire Collar.



Performance

Product Code	Description	To suit	Qty. Per Block	Fire Rating
QUELCAST50	QuelCast50 Cast In Fire Collar to suit 50mm pipes	50mm dia. pipe	8	Up to 4 Hours
QUELCAST110	QuelCast110 Cast In Fire Collar to suit 110mm pipes	110mm dia. pipe	8	Up to 4 Hours
QUELCAST160	QuelCast160 Cast In Fire Collar to suit 160mm pipes	160mm dia. pipe	4	Up to 4 Hours
QUELCAST-MANIFOLD	QuelCast Manifold Recess Former	QUELCAST110	4	Up to 4 Hours*

*When used in conjunction with QuelCast110