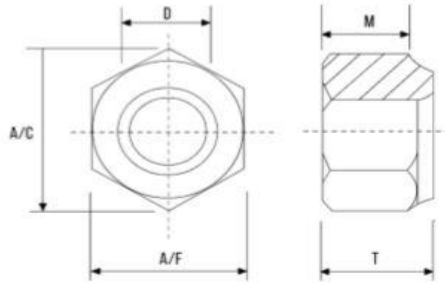


NYLON INSERT NUT (IMPERIAL) - DIN 982 NE (TYPE P)



Diameter		1/4	5/16	3/8	7/16	1/2	9/12	5/8	3/4	7/8	1	1-1/8	1-1/4	1-3/8	1-1/2
TPI	UNC	20	18	16	14	13	12	11	10	9	8	7	7	6	6
	UNF	28	24	24	20	20	18	18	16	14	12	12	12	12	12
A/C	MIN	0.482	0.552	0.622	0.698	0.837	0.978	1.051	1.191	1.403	1.615	1.826	2.038	2.232	2.444
T	NOM	0.328	0.359	0.468	0.468	0.609	0.656	0.765	0.89	0.999	1.078	1.203	1.422	1.609	1.64
M	MIN	0.225	0.25	0.335	0.324	0.464	0.469	0.593	0.742	0.790	0.825	0.93	1.125	1.282	1.313
A/F	MIN	0.43	0.492	0.553	0.615	0.741	0.865	0.928	1.052	1.269	1.45	1.631	1.812	1.994	2.175
	NOM	0.439	0.502	0.564	0.627	0.752	0.877	0.94	1.064	1.252	1.44	1.627	1.815	2.008	2.197
Diameter		1/4	5/16	3/8	7/16	1/2	9/12	5/8	3/4	7/8	1	1-1/8	1-1/4	1-3/8	1-1/2
UNC		✓	✓	✓	✓	✓	✗	✓	✗	✓	✓	✓	✗	✗	✗
UNF		✗	✓	✗	✗	✗	✗	✗	✗	✓	✗	✗	✗	✗	✗

✓ = Indicates sizes normally available from stock or on short lead time.
 ✗ = Indicates sizes available to order (subject to minimum order quantity)